



LA MECÀNICA

THE LITTLE THINGS
Technical Rider

GENERAL INFORMATION

Duration	60 min
Audience	All ages
Team	7 people on tour
Text	Minimal text (voiceovers can be recorded in the Language of the city)

BUMP IN

For a performance at 6pm, an 8am start is required.
A pre-hang of the lighting is required prior to the company's arrival.

STAGE

Optimum: 8m x 8m
Minimum: 7m x 6m
4 legs at either side
Black backdrop
Shoulders of minimum 1.5m at either side
We would welcome a separate room for the company to warm up in
The company brings:

- Grey dance floor 6m x 6m
- Ping pong ball drop that will need to be rigged

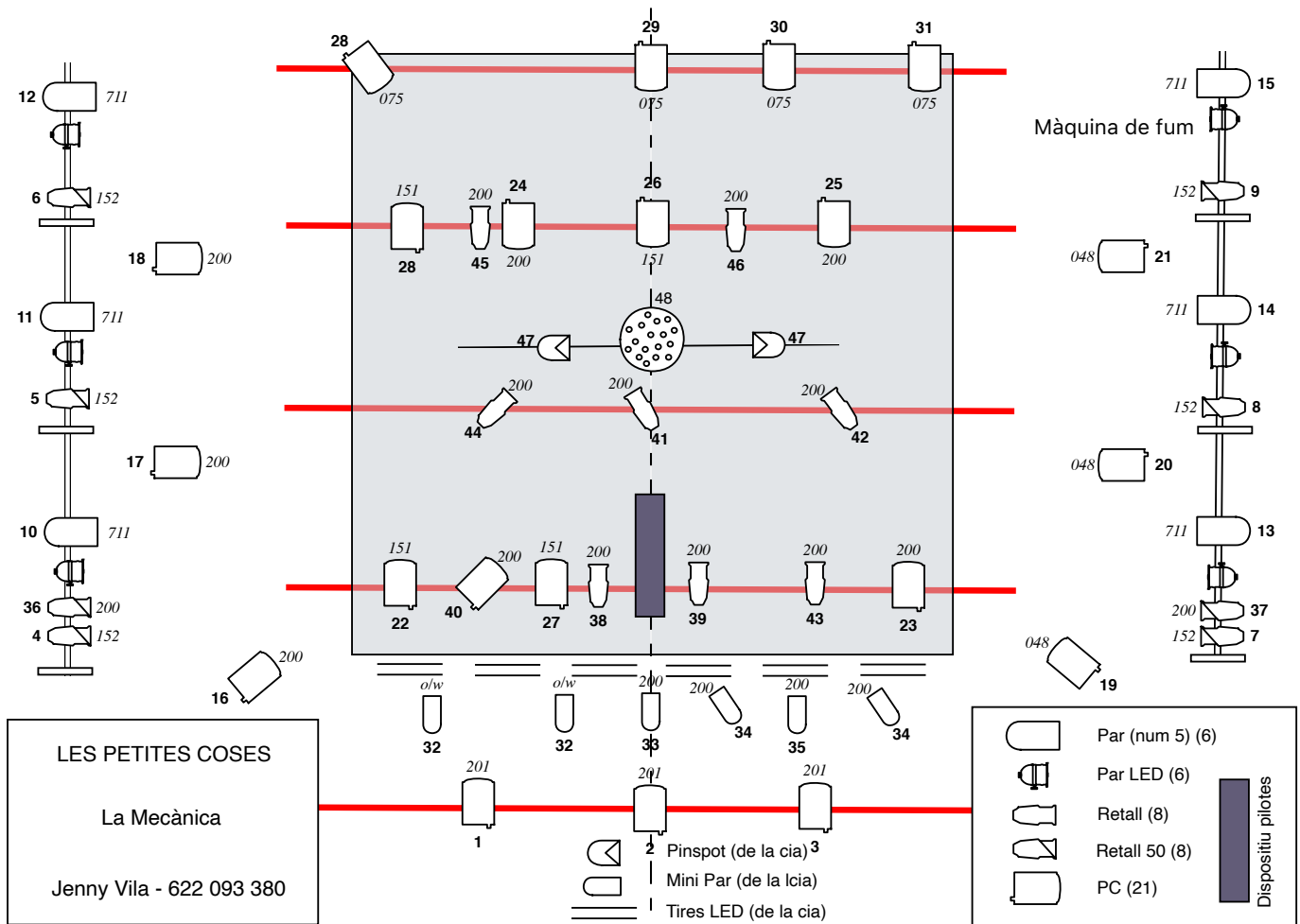
LIGHTING

48 x 2k Dimmers (DMX or DMUX)
8 x profiles 1k 22/50
8 x rprofiles 1k 13/28
21 x PC 1k with barndoors
6 x PAR 64 (CP62)
6 x LED PAR (RGBWAUV)
Smoke machine
8 x 2m lighting booms
6 x floor stands for PCs
The company brings:

- 6 x Birdies
- Dimmable LED strip (6m) – will need DMX
- Mirror ball and 2 x pin spots
- ENTEC DMX to operate the lighting table from our laptop



LA MECÀNICA



SOUND

PA system suitable to the space

2 onstage monitors

Min jack to company's laptop to operate the sound

AV

A 5000 to 10000 lumen projector – front opening of 6m x 4m

HDMI or network cable from projector to control

The company brings:

- Second projector
- Network cable and HDMI adaptor for the company's projector
- Shutters for both projectors (will require DMX line)
- Cradle to rig company projector
- Computer and adaptor USB-C to HDMI



LA MECÀNICA

DRESSING ROOMS

- For four performers (2 women and 2 mens)
- For more than one show, a laundry room will be required
- Showers and towels
- Hospitality: water. Coffee, tea and fruit would be very welcome.

TRANSPORT

The set travels in a van.

2 people to help unload and load the van.

CONTACT

Jenny Vila | 622 093 380 | info@lamecanica.org

Juanro Campos | 686 180 200 | juanro@2ment.com